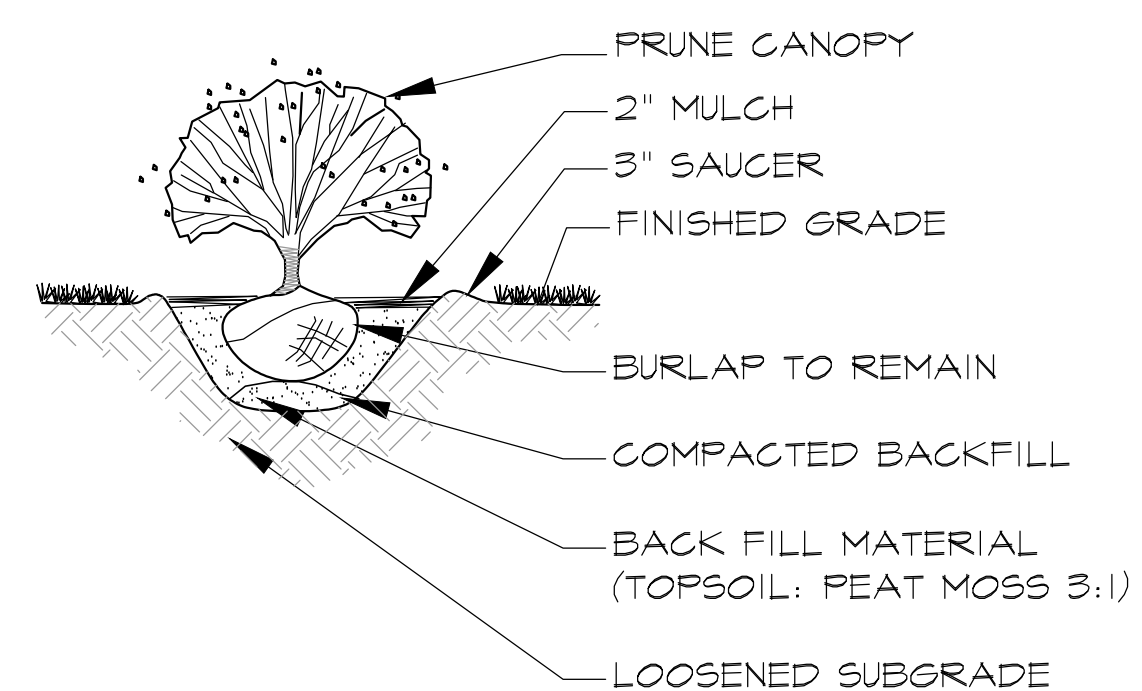
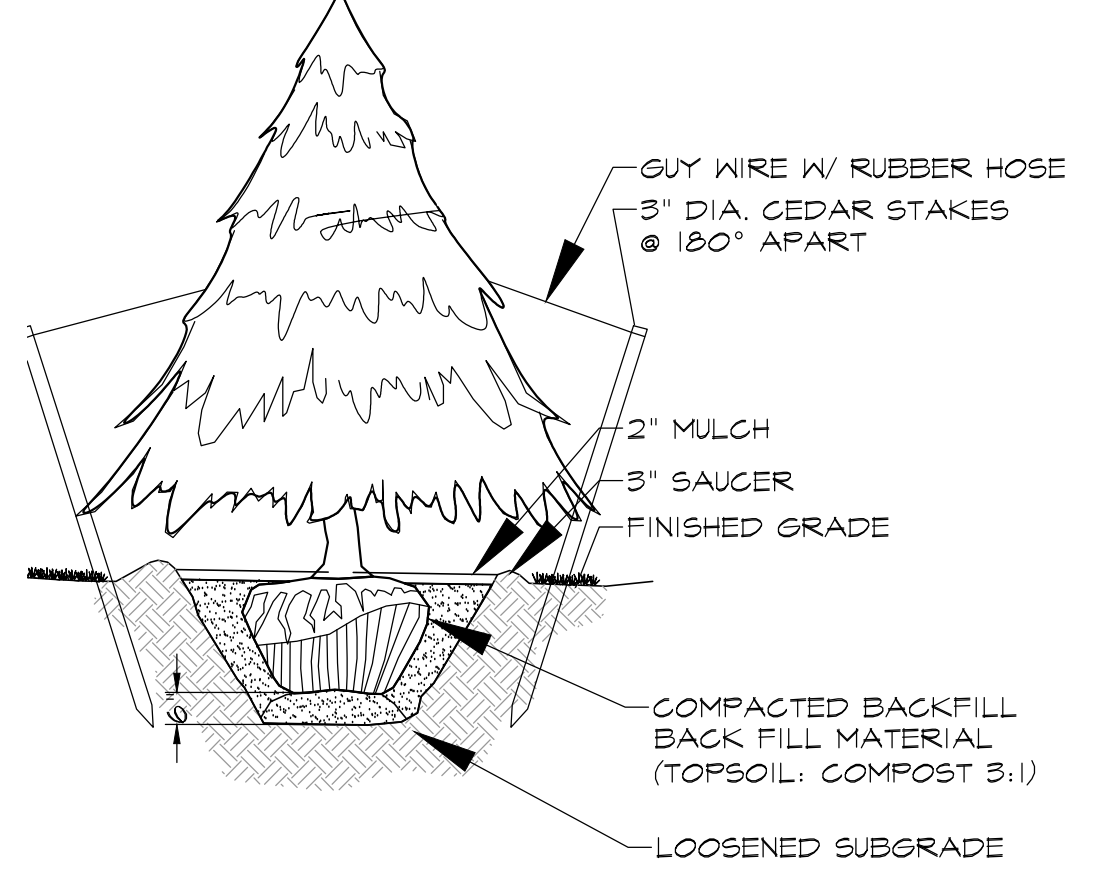


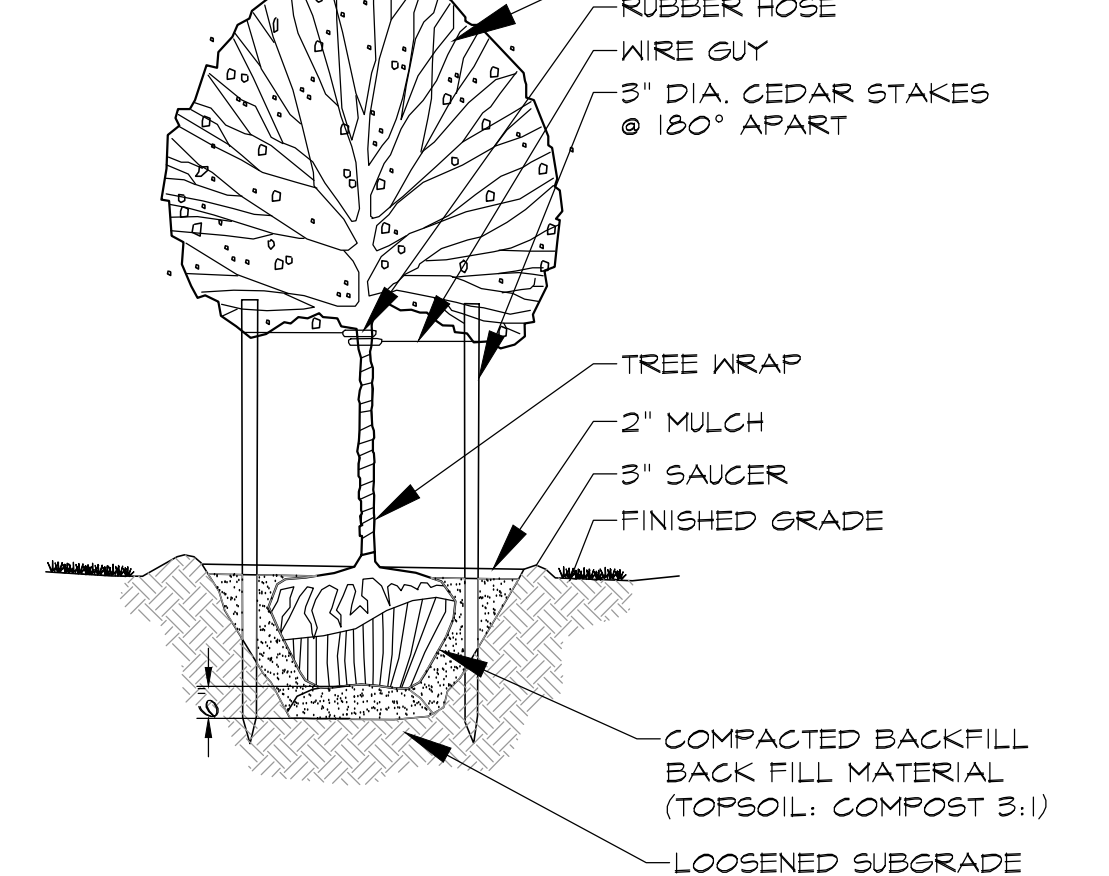
**PERENNIAL DETAIL**  
NOT TO SCALE



**SHRUB DETAIL**  
NOT TO SCALE

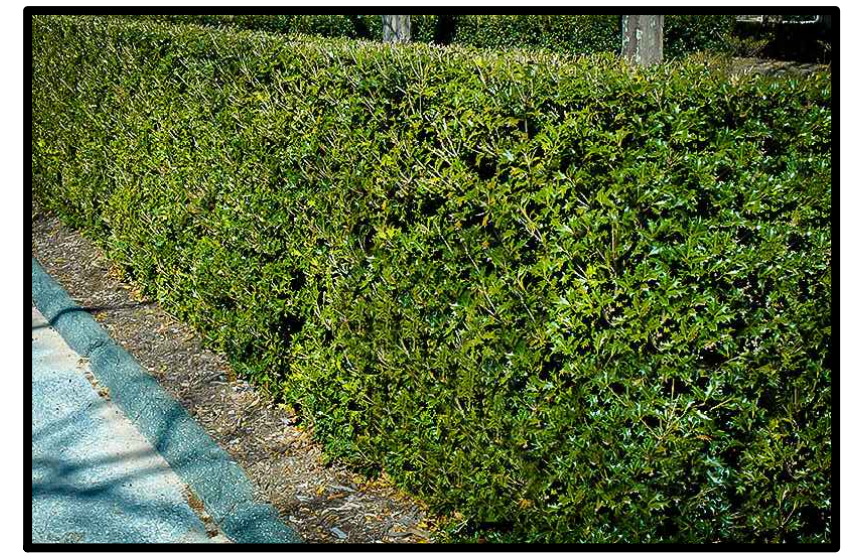


**EVERGREEN TREE DETAIL**  
NOT TO SCALE



**DECIDUOUS TREE DETAIL**  
NOT TO SCALE

**OSMANTHUS HEDGE**



**ROSES**



**KOUSA DOGWOOD**



**HYDRANGEA**



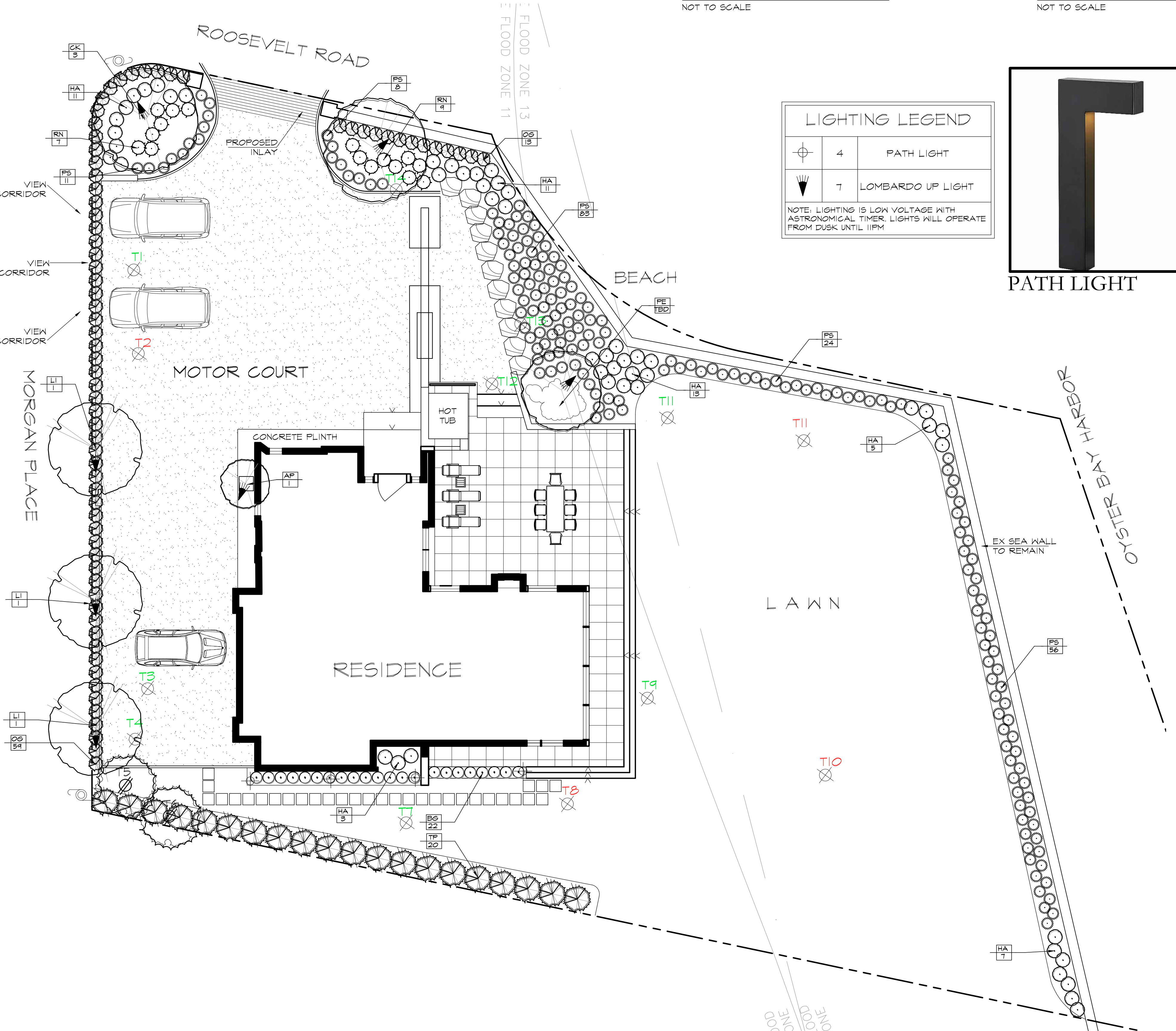
**BOXWOOD HEDGE**



**CRAPE MYRTLE**



**CORAL BARK MAPLE**



**LIGHTING LEGEND**

|  |   |                   |
|--|---|-------------------|
|  | 4 | PATH LIGHT        |
|  | 7 | LOMBARDO UP LIGHT |

NOTE: LIGHTING IS LOW VOLTAGE WITH ASTRONOMICAL TIMER. LIGHTS WILL OPERATE FROM DUSK UNTIL 11PM



**TREE PRESERVATION / REMOVAL SCHEDULE**

| CODE | SIZE | COMMON NAME | KEEP | REMOVE | COMMENTS/ REASON FOR REMOVAL |
|------|------|-------------|------|--------|------------------------------|
| T1   | 24"  | ASH         |      | X      | IN PROPOSED DRIVEWAY         |
| T2   | 30"  | MAPLE       |      | X      | 1/2 DEAD                     |
| T3   | 12"  | SPRUCE      |      | X      | IN PROPOSED DRIVEWAY         |
| T4   | 14"  | SPRUCE      |      | X      | IN PROPOSED DRIVEWAY         |
| T5   | 12"  | SPRUCE      | X    |        |                              |
| T6   | 12"  | SPRUCE      | X    |        |                              |
| T7   | 24"  | TWIN MAPLE  |      | X      | HOUSE CONSTRUCTION           |
| T8   | 14"  | MAPLE       |      | X      | 1/2 DEAD                     |
| T9   | 24"  | ASH         |      | X      | HOUSE CONSTRUCTION           |
| T10  | 24"  | ASH         |      | X      | DEAD                         |
| T11  | 20"  | TWIN MAPLE  |      | X      | HOUSE CONSTRUCTION           |
| T12  | 30"  | ASH         |      | X      | HOUSE CONSTRUCTION           |
| T13  | 42"  | ASH         |      | X      | HOUSE CONSTRUCTION           |
| T14  | 40"  | ASH         |      | X      | DEAD                         |

**PROPOSED NEW PLANT SCHEDULE**

| QTY | SYMBOL | BOTANICAL NAME             | COMMON NAME              | SIZE       |
|-----|--------|----------------------------|--------------------------|------------|
| 1   | AP     | ACER PALMATUM 'SANGO KAKU' | CORAL BARK MAPLE         | 4-5' HT.   |
| 3   | LI     | LAGERSTROEMIA INDICA       | CRAPPE MYRTLE            | 7-8' HT.   |
| 20  | TP     | THUJA P 'GREEN GIANT'      | ARBORVITAE 'GREEN GIANT' | 8' HT.     |
| 3   | CK     | CORNUS KOUSA               | KOUSA DOGWOOD            | 7-8' HT.   |
| 72  | OG     | OSMANTHUS 'GULFTIDE'       | GULFTIDE OSMANTHUS       | 4-5' HT.   |
| 22  | BG     | BUXUS 'WINTERGREEN'        | WINTERGREEN BOXWOOD      | 18-24" HT. |
| 50  | HA     | HYDRANGEA                  | HYDRANGEA                | 5 GAL.     |
| 182 | PS     | PENNISETUM SETACEUM        | FOUNTAIN GRASS           | 3 GAL.     |
| 16  | RN     | ROSA X NOATRAUM            | CARPET ROSE              | 2 GAL.     |
| TBD | FE     | PERENNIALS MIXED           | PERENNIALS MIXED         | 1 GAL.     |

**LEGEND**

|  |                             |
|--|-----------------------------|
|  | GRAVEL MOTOR COURT          |
|  | PROPOSED BOULDER WALL       |
|  | PROPOSED TERRACE            |
|  | PROPOSED TREE TO BE REMOVED |
|  | TREE TO REMAIN              |
|  | PROPOSED PLANTINGS          |

**LANDSCAPE PLAN**  
**STRAUSS RESIDENCE**

448 ROOSEVELT ROAD  
OYSTER BAY, NEW YORK

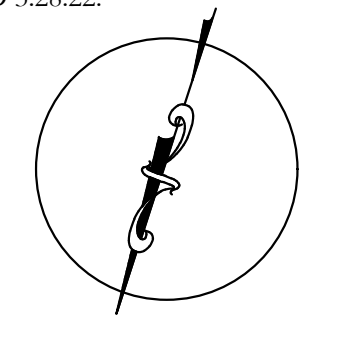


31 Prospect St  
Huntington, New York 11743  
P:(631) 547-5200  
F:(631) 547-0340

910 Montauk Highway  
Water Mill, New York 11976  
P:(631) 726-6610  
F:(631) 726-6619

Copyright by The Laurel Group. The design, drawings, specifications, and documents prepared by this office are instruments of the designer's service. The Laurel Group retains all common law, statutory, and other reserved rights, including copyright. All documents prepared by The Laurel Group shall not be used by the owner/client or others for this project or for any modifications to this project for completion by other. No part of these documents may be reproduced or utilized in any form by any means without written permission from The Laurel Group.  
ALL CONTRACTORS AND SUB CONTRACTORS ARE RESPONSIBLE FOR MARKING OUT AND WORKING SAFELY AROUND ALL UNDERGROUND UTILITIES THAT ARE PRESENT ON THE PROPERTY.

Landscape Architect:  
Kevin J. Natalie, RLA  
NY State RLA # 001775  
36 The Glen  
Glen Head, NY 11545



SCALE: 1"=10'-0"

DATE: APRIL 25, 2022

REVISIONS:

SURVEY NOTES:  
INFORMATION FOR BASE PLAN TAKEN FROM SURVEY BY JERRY LARUE, DATED 06/15/15. ARCHITECTURAL DATA TAKEN FROM DRAWINGS BY CORE GROUP ARCHITECTS, DATED 3.28.22.